

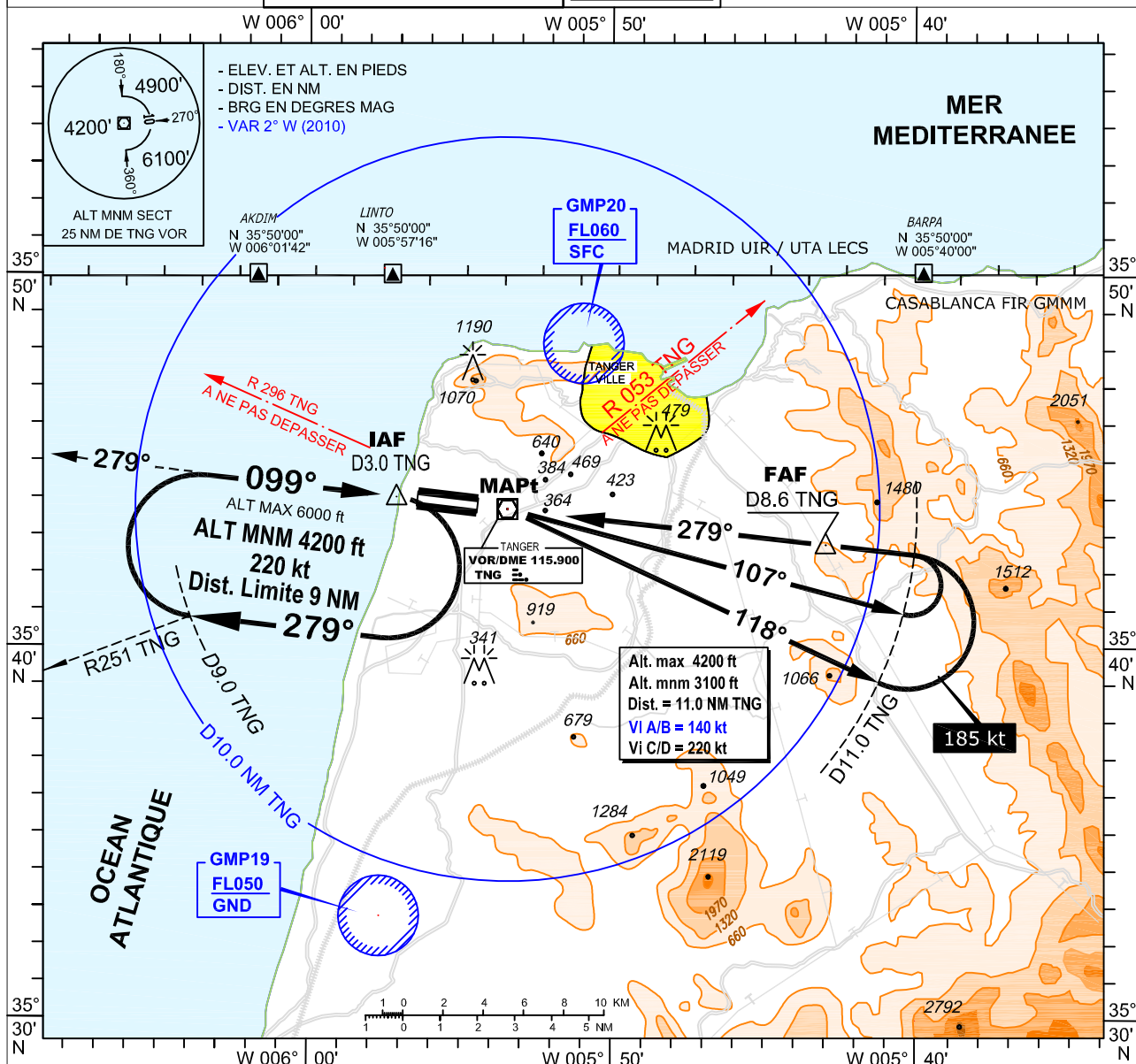
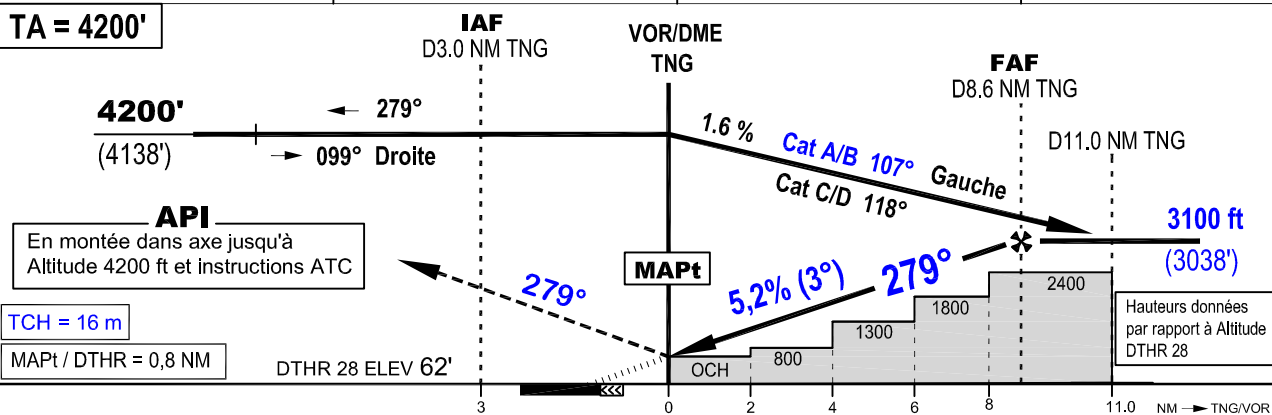
**CARTE D'APPROCHE
AUX INSTRUMENTS
-OACI-**Alt. Aérodrome : 21 m (69 ft)
Alt. DTHR 28 : 19 m (62 ft)Altitude de Transition
4200 ft

TWR : 119.500

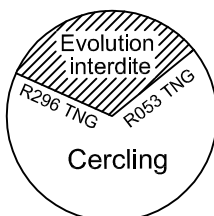
APP : 121.200

TANGER - Ibn Batouta (GMTT)**VOR/DME RWY 28**

Modification : Maintenance de la procédure, Alt. mnm virage, pente (3°), distance FAF/VOR, TCH, MSA, Var 2°W (2010), MVI, Relief, Data.

**TA = 4200'**

OCA/H en pieds	A	B	C	D
Approche Directe	VOR/DME	580 (518)		
Approche Indirecte		1200 (1138)	1500 (1438)	



G.S.	KT	90	110	130	150	170	180	190
FAF / VOR = 8.6 NM	min : s	5:44	4:41	3:58	3:26	3:02	3:52	2:43
Vitesse verticale de descente	ft / s	8.0	9.7	11.5	13.3	15.0	15.9	16.8

DME TNG	VOR	1	2	3	4	5	6	8
Altitudes (Hauteurs) 3° APCH	370 ft (308 ft)	690 ft (628 ft)	1010 ft (948 ft)	1230 ft (1168 ft)	1640 ft (1578 ft)	1960 ft (1898 ft)	2280 ft (2218 ft)	2920 ft (2858 ft)

Tableaux de données au verso

TANGER Ibn Batouta (GMTT)

VOR/DME RWY 28

TABLEAU DE DONNEES AERONAUTIQUES

Approche VOR/DME RWY 28

Repère / Point	Coordonnées	
DTHR RWY 28	35°43'49,05" N	005°54'26.39" W
MAPt (VOR/DME)	35°43'43.73" N	005°53'26.87" W
FAF - BRG 278.80°/ D8.58 NMTNG	35°42'47.26" N	005°42'57.55" W
IAF - BRG 098.70°/ D3.0 NM TNG	35°44'03.23" N	005°57'06.45" W